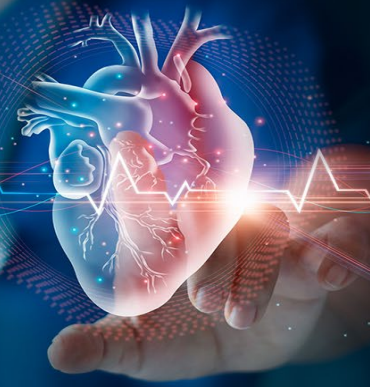
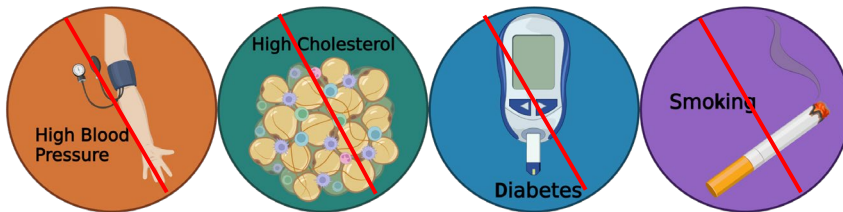


The SMuRFless CAD Clinic



Do you have a patient with coronary artery disease but not these risk factors?



Consider referring to our specialty clinic

Coronary heart disease was the leading single cause of death in Australia in 2021, equivalent to 10% of all death. The **SMuRFless CAD Clinic** was established by a global team of experts to find out why some people develop coronary artery disease (CAD) **without** having standard modifiable cardiovascular risk factors (SMuRFs) and why these people have poorer health outcomes in comparison to people with CAD who *do* have one or more SMuRFs.

Why refer?

A cardiologist with a special interest in CAD without traditional risk factors will review your patients' medical history and work with you to understand if they have less common risk factors for CAD. Our team will optimize their care management. This does not replace your care or that of their usual cardiologist (if relevant).

How can I refer?

You can refer patients to the coronary artery disease (without traditional risk factors) service via HealthLink eReferrals that are embedded in your software such as Best Practice, Medical Director (v3.16), Genie and Medtech Evolution.



Location

- Level 4, Diagnostic Cardiology
Royal North Shore Hospital
St Leonards,
NSW, 2065
- OR telehealth



Criteria

- Your Patient must have been diagnosed with CAD or have a family history of CAD

AND

- **Not** have high blood pressure, high cholesterol, or diabetes

AND

- They must not have smoked in the past 12 months



More Information

Sandalika Illangamudalige
Clinical Trial Research Assistant
sandalika.illangamudalige@sydney.edu.au
0423 763 468